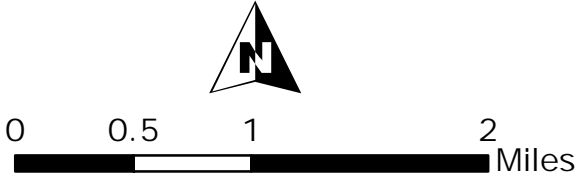


Contoocook & North Branch Rivers
Management Plan
Greenfield

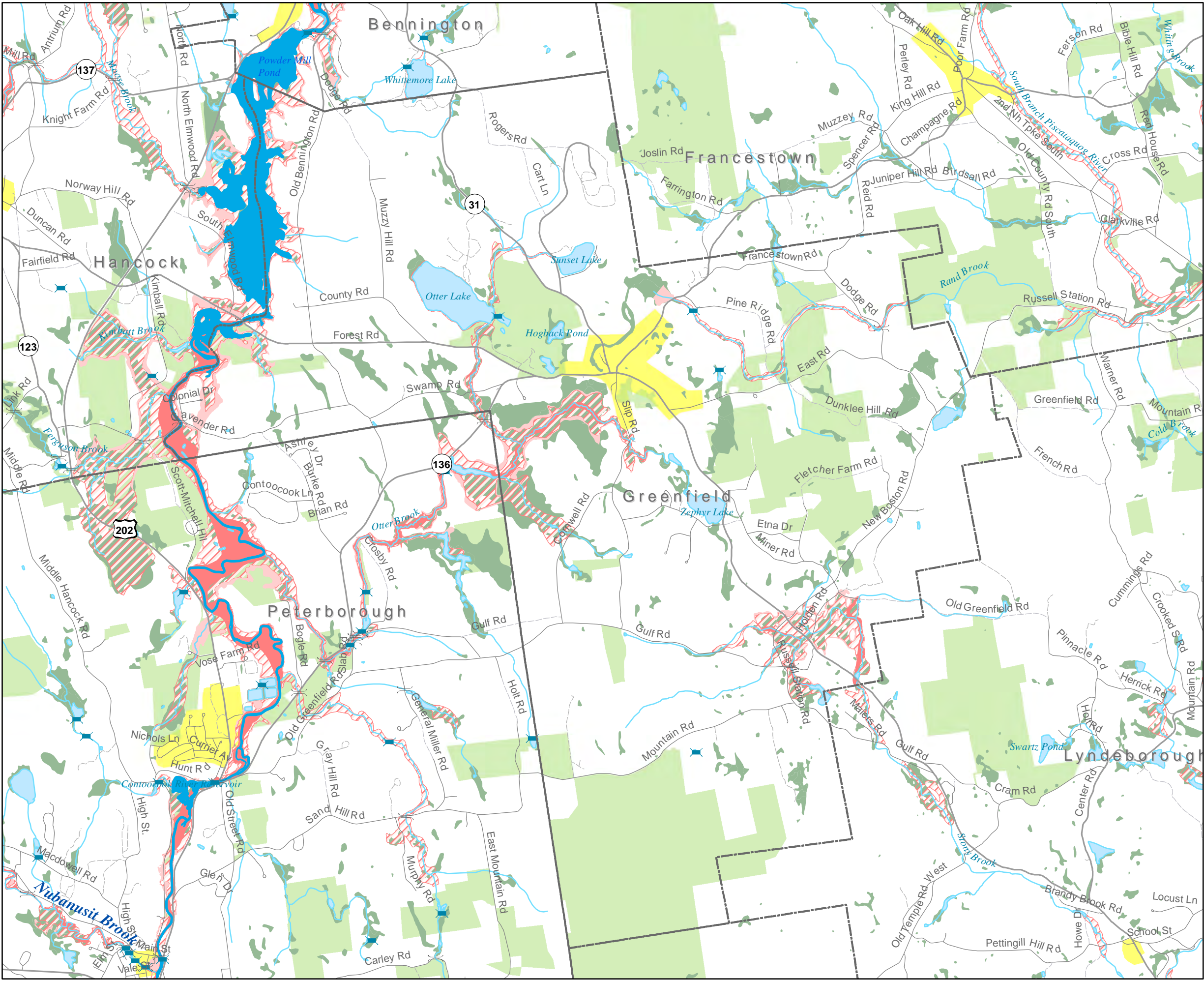
- County Boundary
- Town Boundary
- Community Center Areas
- Lakes and Ponds
- Rivers and Streams
- Wetlands
- Active Dams
- Bridges
- Conservation Lands
- Floodplains**
 - Floodway
 - 1% Annual Flood Risk
 - 0.2% Annual Flood Risk

Data sources: 1:24,000 source data from NH GRANIT; flood data from FEMA through NH GRANIT; Road and bridge data from NH Dept. of Transportation; Dams data from NH Dept. of Environmental Services.







This map is for planning purposes only. Neither CNHRPC nor CNBRLAC make any representations as to the accuracy or validity of these data, and this map should not be used for regulatory or site specific determinations. Map created in November 2009 by CNHRPC.



Funding provided by the NH Department of Environmental Services through Section 604(b) of the Clean Water Act with funds appropriated by the American Recovery and Reinvestment Act of 2009.

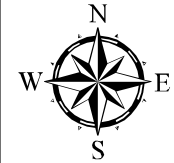
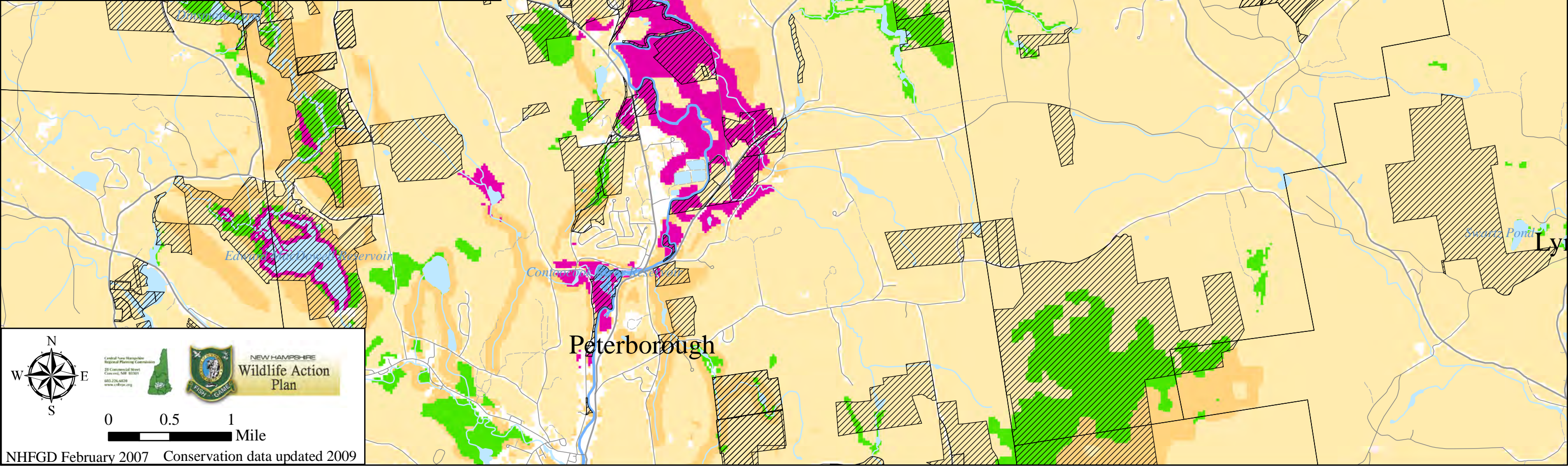


HIGHEST RANKED WILDLIFE HABITAT BY ECOLOGICAL CONDITION

-  Highest Ranked Habitat in NH
-  Highest Ranked Habitat in Biological Region
Biological region = TNC ecoregional subsection for terrestrial habitats or watershed group for wetlands and forest floodplain.
-  Supporting Landscapes (of regional significance)
-  Wildlife Habitat not top-ranked
(locally significant habitat scores to be determined)
-  Developed land cover
-  Conservation or public land

- Information about habitat condition was analyzed to develop a statewide and regional ranking and identify the highest quality habitat relative to all polygons of a given habitat type in the state.
- The goal is to provide regional planners and conservation professionals a tool in identifying the most critical wildlife habitat locations.
- Results will be re-evaluated to monitor the effectiveness of conservation actions and respond appropriately to new information or changing conditions.

Please refer to accompanying documents describing habitat condition/scoring.



0 0.5 1
Mile

NHFGD February 2007 Conservation data updated 2009

Contoocook & North Branch Rivers
Management Plan

Zoning
in Greenfield

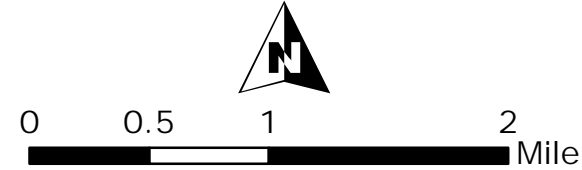
Legend

Greenfield Zoning

- Business District
- General Residence
- Industrial Areas
- Rural/Agriculture
- Village District

Data sources: Hydrography 1:24,000
source data from NH GRANIT; Roads data
from NH Dept. of Transportation; Zoning
layers from CNHRPC, SWRPC, and towns.

This map is for planning purposes only.
Neither CNHRPC nor CNBRLAC make any
representations as to the accuracy or
validity of these data, and this map should
not be used for regulatory or site specific
determinations. Map created in November
2009 by CNHRPC.



Funding provided by the NH Department of
Environmental Services through Section 604(b) of
the Clean Water Act with funds appropriated by the
American Recovery and Reinvestment Act of 2009.

