

Contoocook & North Branch Rivers  
Management Plan

Deering

- County Boundary
- Town Boundary
- Community Center Areas
- Lakes and Ponds
- Rivers and Streams
- Wetlands
- Active Dams
- Bridges
- Conservation Lands

Floodplains

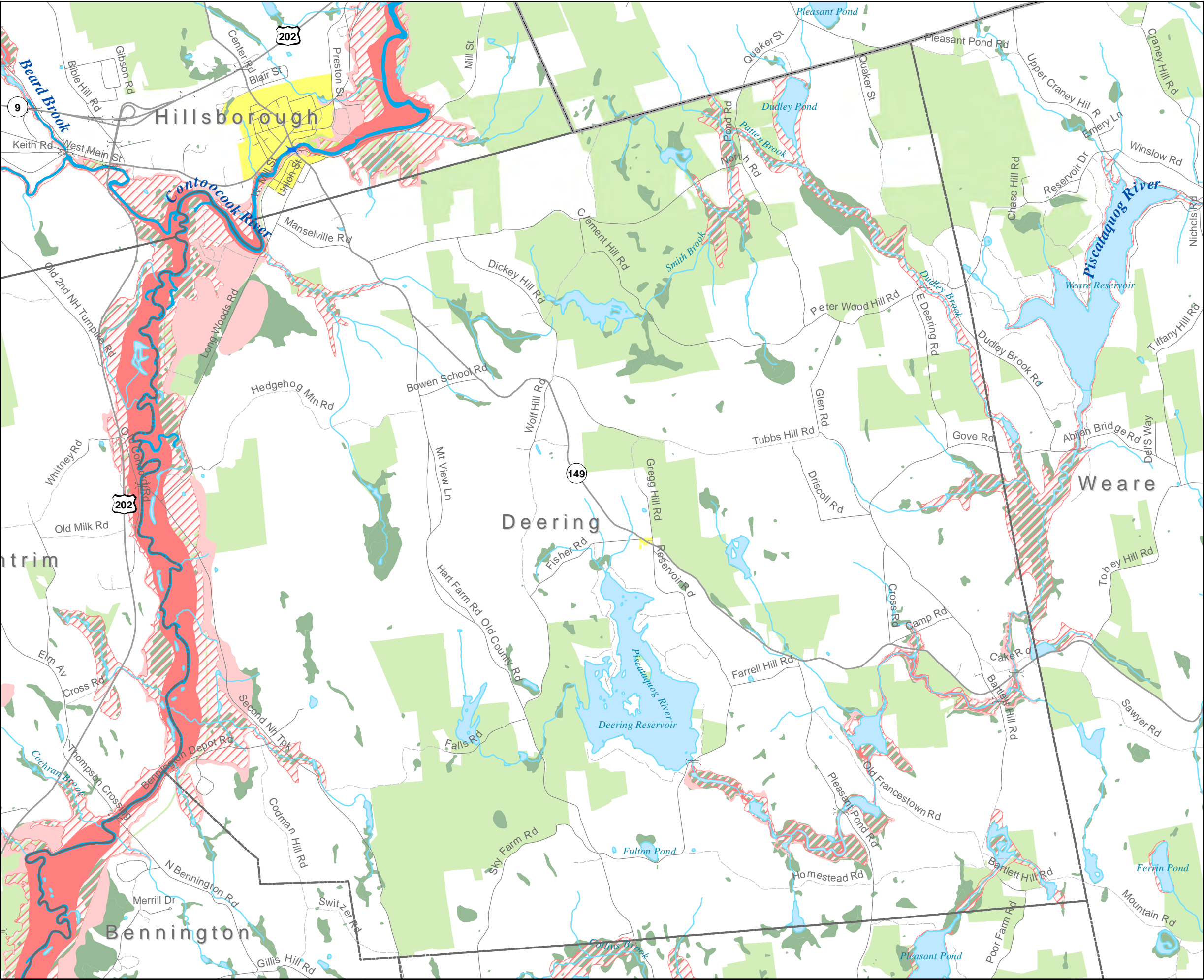
- Floodway
- 1% Annual Flood Risk
- 0.2% Annual Flood Risk

Data sources: 1:24,000 source data from NH GRANIT; flood data from FEMA through NH GRANIT; Road and bridge data from NH Dept. of Transportation; Dams data from NH Dept. of Environmental Services.

This map is for planning purposes only. Neither CNHRPC nor CNBRLAC make any representations as to the accuracy or validity of these data, and this map should not be used for regulatory or site specific determinations. Map created in November 2009 by CNHRPC.









Funding provided by the NH Department of Environmental Services through Section 604(b) of the Clean Water Act with funds appropriated by the American Recovery and Reinvestment Act of 2009.



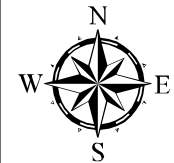
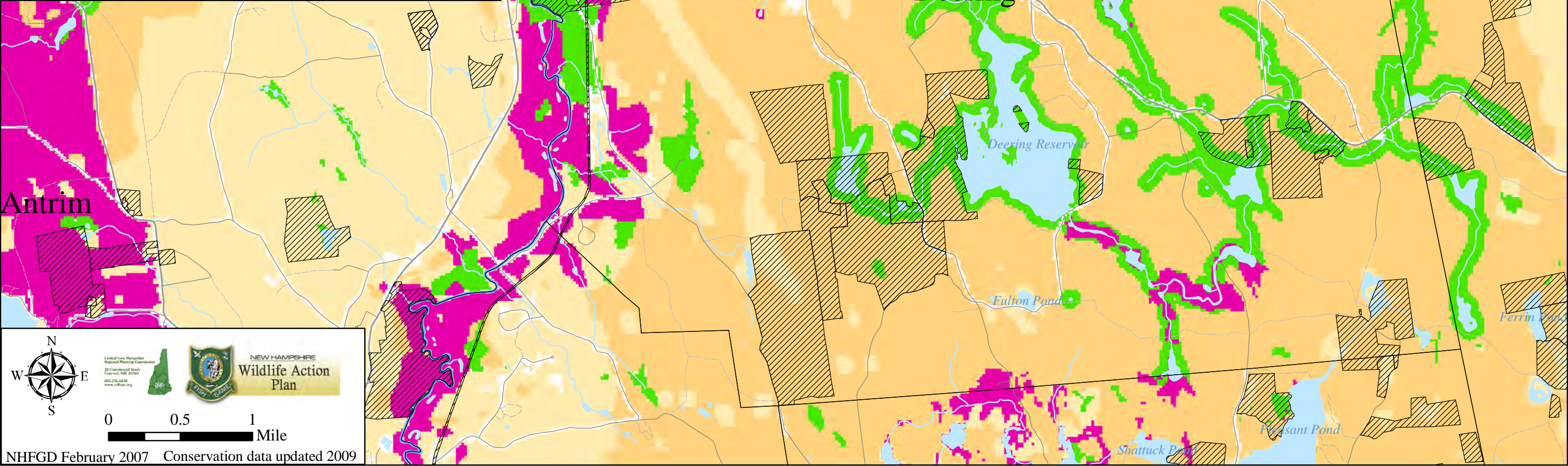


# HIGHEST RANKED WILDLIFE HABITAT BY ECOLOGICAL CONDITION

-  Highest Ranked Habitat in NH
-  Highest Ranked Habitat in Biological Region  
Biological region = TNC ecoregional subsection for terrestrial habitats or watershed group for wetlands and forest floodplain.
-  Supporting Landscapes (of regional significance)
-  Wildlife Habitat not top-ranked  
(locally significant habitat scores to be determined)
-  Developed land cover
-  Conservation or public land

- Information about habitat condition was analyzed to develop a statewide and regional ranking and identify the highest quality habitat relative to all polygons of a given habitat type in the state.
- The goal is to provide regional planners and conservation professionals a tool in identifying the most critical wildlife habitat locations.
- Results will be re-evaluated to monitor the effectiveness of conservation actions and respond appropriately to new information or changing conditions.

Please refer to accompanying documents describing habitat condition/scoring.



Central New Hampshire  
Regional Planning Commission  
29 Commercial Street  
Concord, NH 03301  
603.226.6828  
www.cnrpa.org



NEW HAMPSHIRE  
Wildlife Action  
Plan

0 0.5 1  
Mile

NHFGD February 2007 Conservation data updated 2009

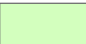




Contoocook & North Branch Rivers  
Management Plan

Zoning  
in Deering

Legend

Deering Zoning

-  Agricultural/Residential
-  Aquifer Protection Overlay
-  Wetlands Conservation District

Data sources: Hydrography 1:24,000 source data from NH GRANIT; Roads data from NH Dept. of Transportation; Zoning layers from CNHRPC, SWRPC, and towns.

This map is for planning purposes only. Neither CNHRPC nor CNBRLAC make any representations as to the accuracy or validity of these data, and this map should not be used for regulatory or site specific determinations. Map created in November 2009 by CNHRPC.



Funding provided by the NH Department of Environmental Services through Section 604(b) of the Clean Water Act with funds appropriated by the American Recovery and Reinvestment Act of 2009.



New Hampshire  
Department of  
Environmental  
Services  
29 Hazen Drive Concord NH 03301



Central New Hampshire  
Regional Planning Commission  
28 Commercial Street  
Concord, NH 03301  
603.226.6020  
www.cnhrpc.org

